



Floating Dock
Accessories and
Samples

City of Nehalem

February 8, 2022



Non-motorized
Launches, extensions,
and universal
accessibility

SAMPLES

Non-motorized

Accessories:

- Ladders
- Handrails
- Cleats
- Lighting



Photo: *July 2021*
North City of Nehalem Dock



*Photo: July 2021
North City of Nehalem Dock*









- Residential Docks
- Commercial & Municipal
- Rowing & Paddle Docks
- Dock Accessories
- Boat Lifts
- Kayak Launches & Lifts
- Kayak Storage & Trailers
- Boathouses & Foundations
- Stairs & Hillside Trolleys
- Marine Construction
- Shop Online
- Customer Service
- Contact Us





Other docks and upgrades in Oregon
Photos contributed by: OSMB

Photo: *OSMB, Tugman State Park: AccuDock system.*
Reported as not user friendly as other systems.



Other docks and upgrades in Oregon

Photo: Clear Lake in Willamette Nat'l Forest, Linn County

The first step is surprising because it is a step down.



Photo: Scappoose Bay

Similar to Clear Lake sample but attachment to dock is more stable.





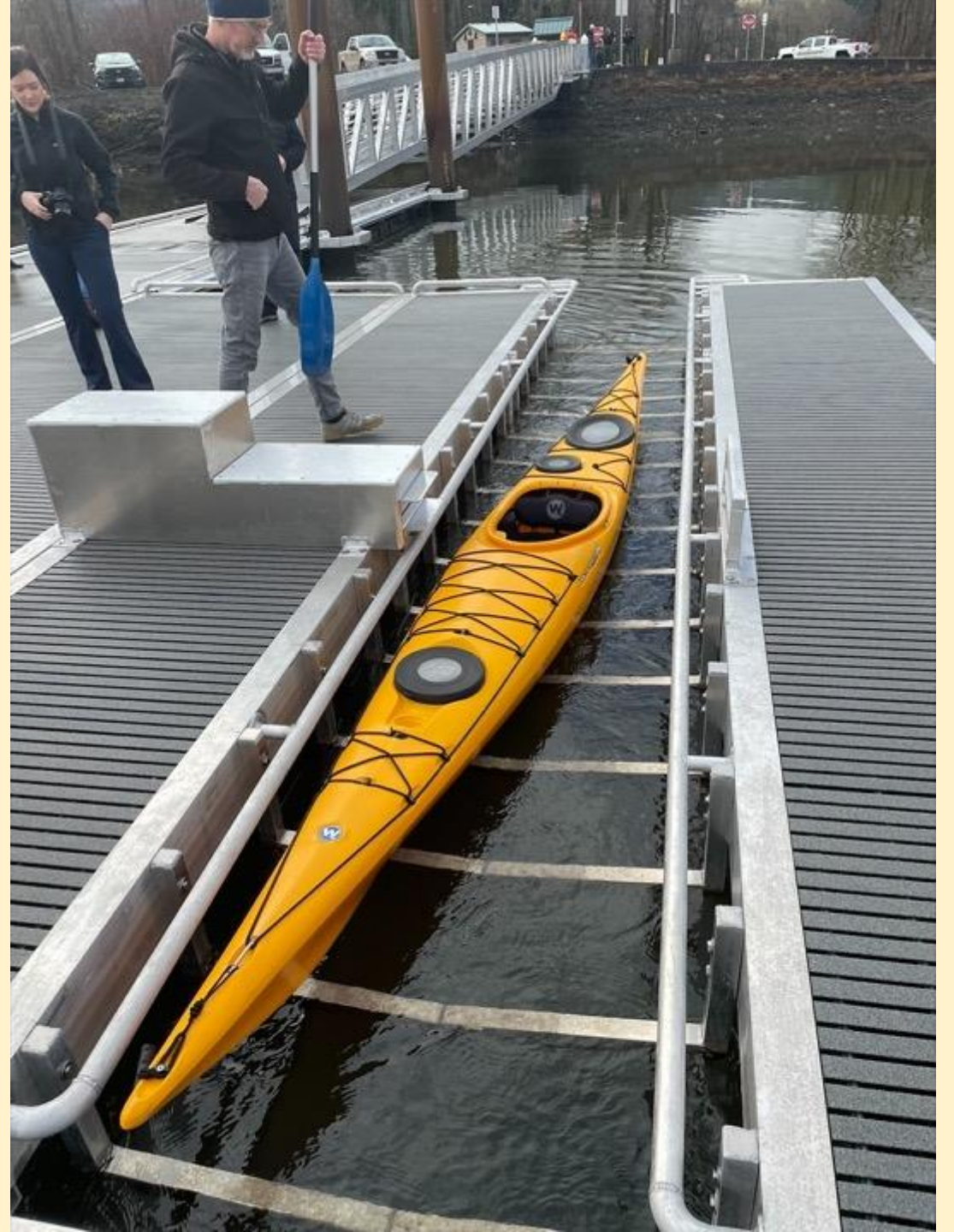
Photo: Reedsport, OR

This was retro attached to docks. Very bouncy attachment, not great. Dock is too small to maneuver boat/gear. AccuDock.



Photo: Westport, OR

This is a prototype accessible nonmotorized launch. The transition bench has two slide outs to span the channel where the boat sits. It is attached to a large dock.





OSMB Photo:
Champoeg State Park, OR

The yellow is s step down.
GatorDock brand.



Photo: Seaside,
OR, Broadway
Park, Necanicum
River

Universal Access



Photo: Seaside,
OR, Broadway
Park, Necanicum
River

Universal Access



Photo: Seaside,
OR, Broadway
Park, Necanicum
River

Universal Access



Photo: Seaside,
OR, Broadway
Park, Necanicum
River

Universal Access

Kay-aKcess has accessories for floating docks. See the Railings, SUP Racks and Safe-Launch items below. [Contact Us](#) for more Dock Accessory information.



3' Overhead Assist Bar

ACC - OA3
\$189 Each

4' Overhead Assist Bar

ACC - OA4
\$249 Each



Side Assist Railing

ACC - SR2
\$179 Each



3' x 8' Safe Launch

ACC - 308SF
Includes Accessory Kit: 2 Cleats, 2 Cleat Plates, 2 Rope Retainer Loops and Adjustment Rope
\$929

3' x 12' Safe Launch

ACC - 312SF
Includes Accessory Kit: 2 Cleats, 2 Cleat Plates, 2 Rope Retainer Loops and Adjustment Rope
\$1,099



Paddleboard Railing

Paddleboard Railing
ACC-PBR
\$189 Each

Handrails...





Floating Dock Lift Ladders

(For Floating Docks)

The Floating Dock Lift Ladder is an innovative, SHORT base retractable ladder. To extend the life of the ladder, simply pull up the lower section above the water line to eliminate marine growth. The plastic coated lift cable will provide long lasting service.

Available in 4, 5 and 6 step.

[Do you need help figuring out how which style ladder and how many steps you need? Click here](#)

[Assembly and Installation Instructions](#)



Swing Ladders

(For Fixed or Floating Docks)

The Straight Swing Ladder is a classic innovation that allows you to swing the ladder completely above the dock when not in use. A locking pin mechanism locks ladder in either up or down positions.

Available in 3, 4, 5, 6, and 7 step.

[Do you need help figuring out how which style ladder and how many steps you need?](#)

[Click here](#)

[Ladder Dimensions](#)



Finger Pier Lift Ladders

(For Fixed/Stationary Finger Piers)

The Finger Pier Lift Ladder is an innovative, retractable ladder that only takes up 8" on the dock, which makes it ideal for use on narrower fixed docks and walkways. To extend the life of the ladder, simply pull up the lower section above the water line to eliminate marine growth. The plastic coated lift cable will provide long lasting service.

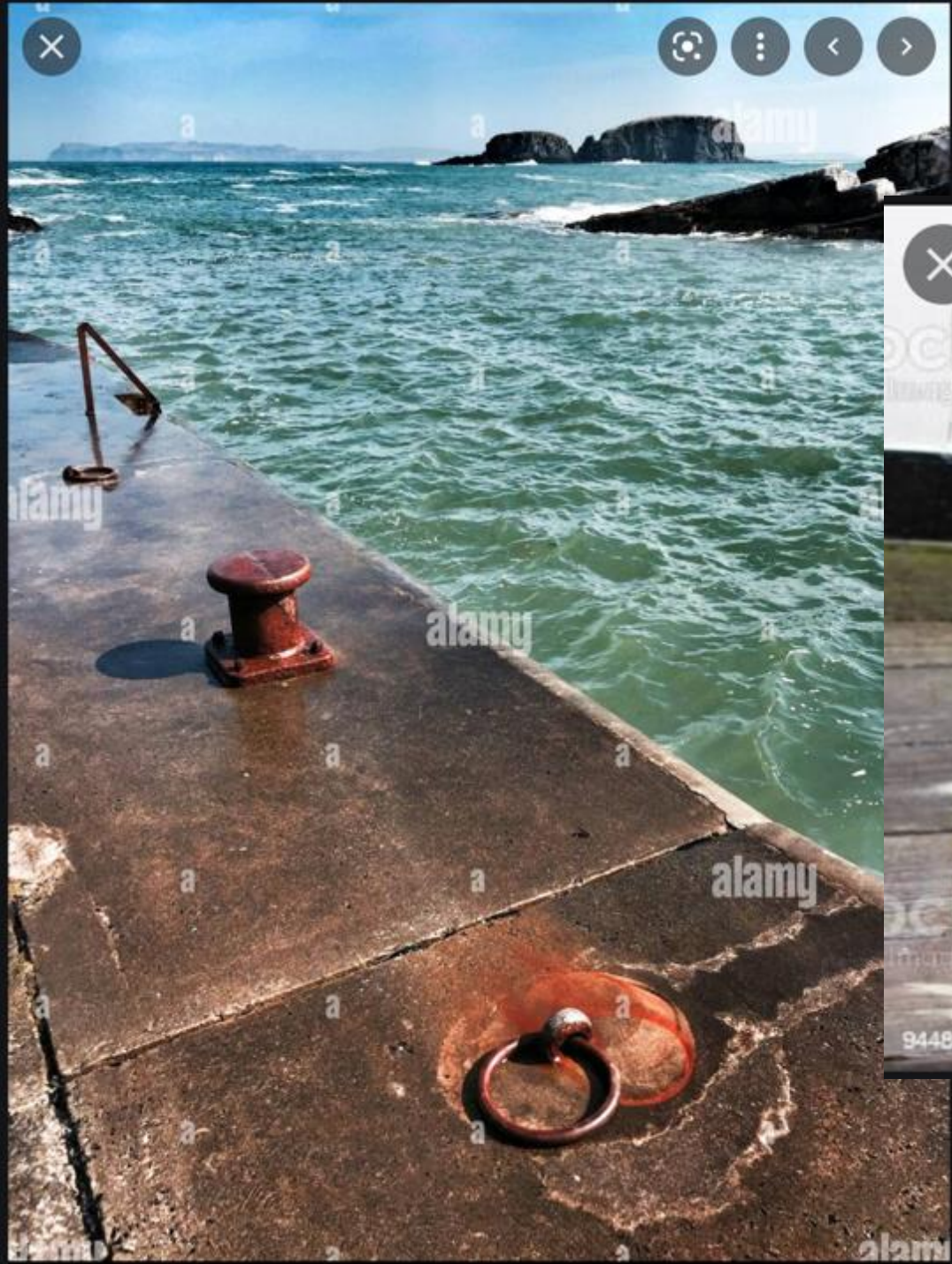
Available in 4, 5, 6 and 7 step.

[Do you need help figuring out how which style ladder and how many steps you need? Click here](#)

[Assembly and Installation Instructions](#)



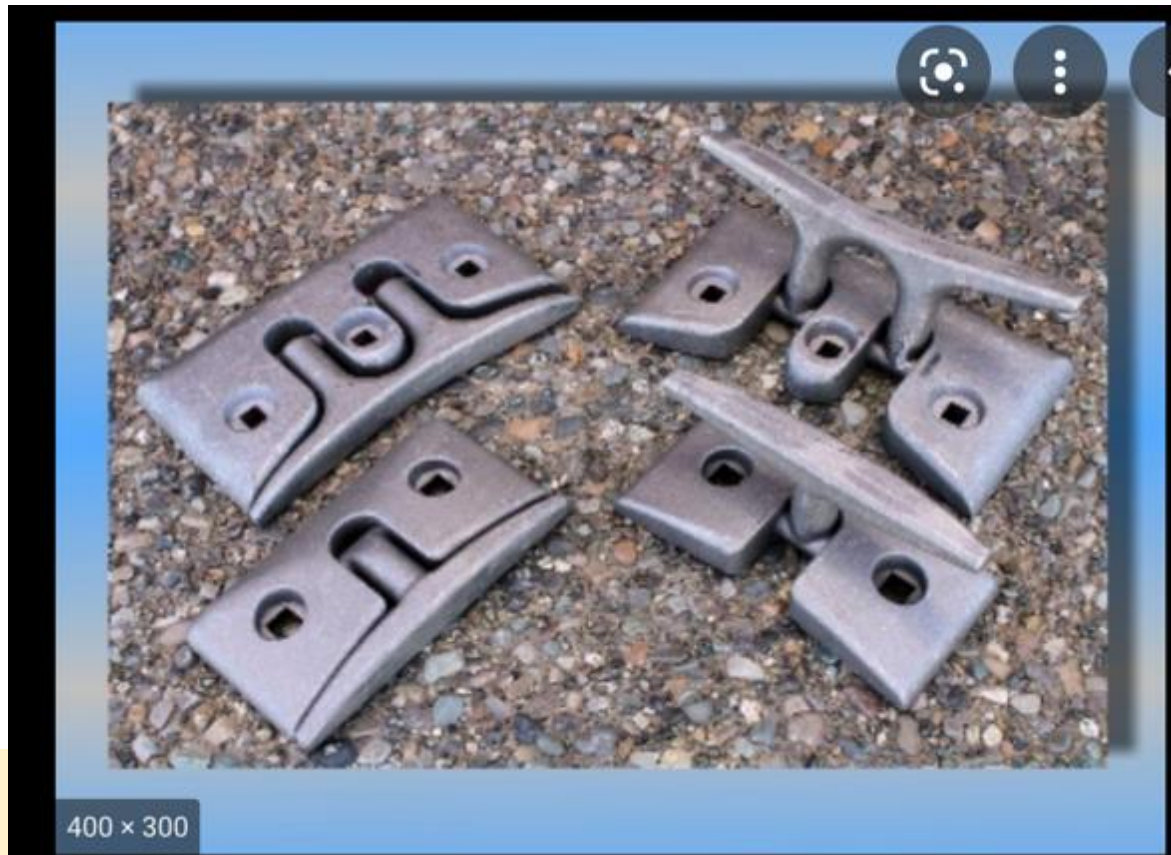
Dock cleats, bull rails, and tie offs...



[Home](#) / [Dock Edge+](#) / [Cleats](#) / [FLIP-UP™ CLEATS](#)



FLIP-UP™ CLEATS





\$529.95

MPN:
LL-SKL-IR

Add to

Sky Lite IR 5W Lamp 12W Panel Solar Light





Lighthouse



Canadian
and U.S.

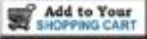
With more than 50,000 units in service around the world, the Lighthouse power pedestal, with its unique design, is functional, practical, and attractive yet tough enough to stand up to the severe service required in marinas from Alaska to the tropical islands. No other marina power pedestal offers all of these features; the Lighthouse is our most powerful unit.

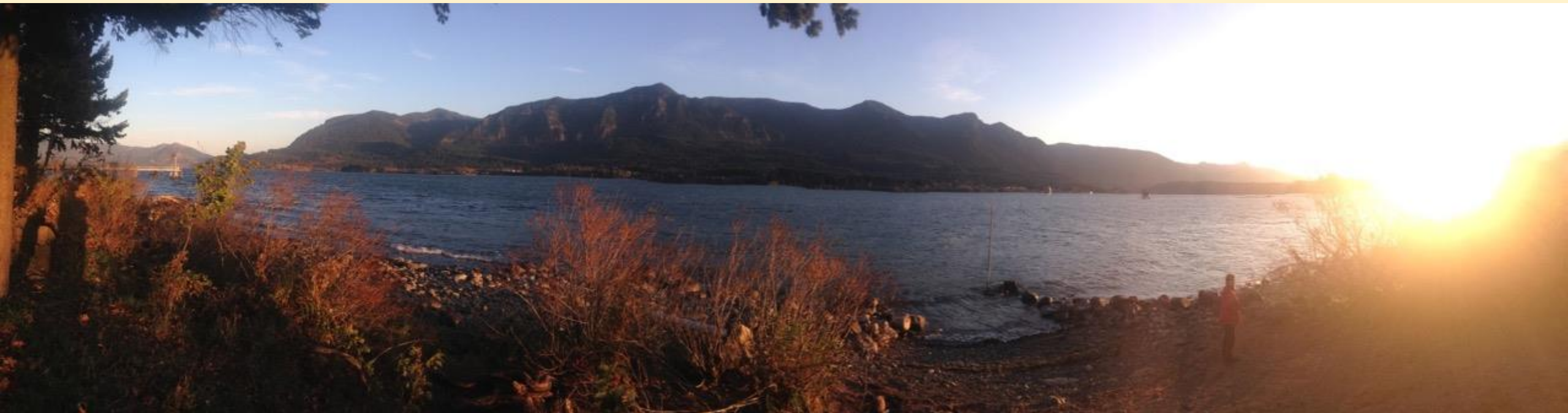
The Lighthouse was tested to the toughest standard, ANSI/UL 231 by Underwriters Laboratories. Other manufactured units on the market with polyethylene housing will actually melt and burn when tested to the U.L. standards.



Product Specifications & Options:

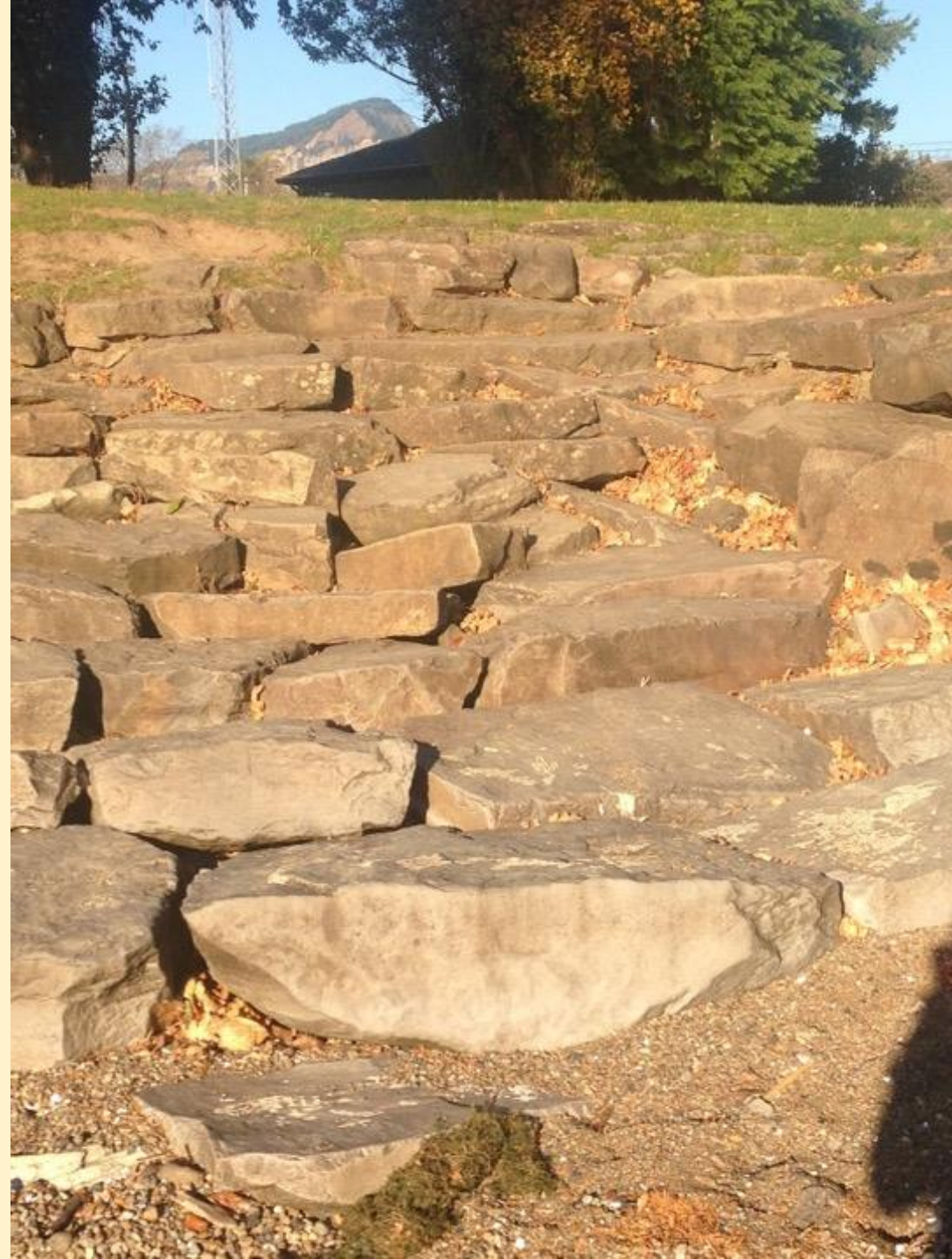
- Lockable doors that fully close and are weatherproof when in use (a requirement of 410-57 of the National Electric Code)
- Photo cell controlled 13 watt fluorescent light that provides 360 degree lighting
- 1/4" thick tough Lexan® housing, thicker than any other housing on the market
- All wiring is fine stranded tin plated copper for flexibility and corrosion resistance
- Easy serviceability - in less than five minutes a breaker, receptacle, meter, or light can be changed
- Now with copper bus bars and a 250 amp rating, we can provide any combination of 20, 30, 50, or 100 amp receptacles up to the 250 amp rating
- All units can be electronically metered for direct or computer readout
- Hinged base and top allow us to pre-wire the unit, saving installation time over units that have separate bases
- Backlit receptacles for easy use at night
- Door hinge not pop riveted
- Dual water hook-ups
- TV/phone connections
- 100% polycarbonate (Lexan®) housing with lifetime warranty

ITEM NUMBER	CONFIGURATION	PRICE IN U.S. DOLLARS	
PP-E-L1	<ul style="list-style-type: none"> • Amber Lens Color • LED Light • Photo Cell-Controlled Light • Fuse Lighting Protection • Unmetered • Single Phase 3/8in. Copper Bus Bar • 1 x 30A, 125V Receptacle - Side 1 • 1 x 30A, 125V Receptacle - Side 2 • 1 x 20A GFI Duplex Receptacle • 2 x Water Connection 	\$1,041.54	



Non-motorized
Launch/Access:
Stevenson, WA







COMMUNICATION:

Audiences – The People
Businesses
Community
Visitors

Signage

Traffic Flow

Invitation

Education

Joy/Mental Health



Wheeler, OR

July 2021





SIGNAGE

Photo: Warrenton, OR



Connecting Mountains to Ocean
The Nehalem River Watershed

From the Rainier and Willamette River, part of the Oregon National Monument and Cascade Range, to the Willamette Valley, the Nehalem River watershed is a vital link between the mountains and the coast.

One of Oregon's longest free-flowing rivers, the Nehalem runs 120 miles (193 kilometers) from its headwaters in the Pacific Coast Range, along the base of Mt. Hood, through the forest to the coast. The river supports steelhead trout, coho salmon, and Chinook salmon, which are important food sources for people and wildlife, and are also important for the forest and the coast.

Photo: U.S. Forest Service, Oregon Department of Fish and Wildlife, and Oregon National Monument

Connecting Mountains to Ocean
The Nehalem River Watershed

From the Rainier and Willamette River, part of the Oregon National Monument and Cascade Range, to the Willamette Valley, the Nehalem River watershed is a vital link between the mountains and the coast.

One of Oregon's longest free-flowing rivers, the Nehalem runs 120 miles (193 kilometers) from its headwaters in the Pacific Coast Range, along the base of Mt. Hood, through the forest to the coast. The river supports steelhead trout, coho salmon, and Chinook salmon, which are important food sources for people and wildlife, and are also important for the forest and the coast.

Photo: U.S. Forest Service, Oregon Department of Fish and Wildlife, and Oregon National Monument

Wildlife
The river provides one of the best remaining Wild Salmon habitats in Oregon. Rules of the Nehalem Club with respect to fishing also protect the river.

Steelhead
As you paddle along the trail or walk from the banks, look for steelhead and other wildlife such as river otter, beaver, eagles, black bears, deer, or elk.

Salmon
Coho and steelhead are among the wild salmon species in the watershed. Coho salmon are found in the Nehalem River, Willamette River, and other watersheds in Oregon.

Steelhead
Steelhead are a type of salmon that live in the ocean and return to the river to spawn. They are an important part of the watershed's ecosystem.

Tillamook Coast

EXPERIENCE

Photo: U.S. Forest Service, Oregon Department of Fish and Wildlife, and Oregon National Monument







Nehalem

- | | |
|------------------|--------------------|
| LEGEND | DEVELOPMENT |
| • Residential | • Commercial |
| • Industrial | • Public |
| • Institutional | • Religious |
| • Educational | • Cultural |
| • Government | • Health |
| • Social | • Recreation |
| • Open Space | • Utilities |
| • Transportation | • Other |





The Nehalem Ferry (1914) connected the villages of Wheeler and Nehalem before the first highway bridge to the north was built in the early 1930s.
An historic photo courtesy of Northwest Forest Heritage Society.

Nehalem: Living with a River

The city of Nehalem—a tribal name for “where the people live”—was officially chartered in 1899 but Euro-American settlement began as early as the 1870s on the unceded tribal lands of the Tillamook, Clatsop and Nehalem people. The city developed quickly with most services and commerce available including a sawmill, telephone exchange, salmon cannery and hotel.

After the turn of the 20th century, new jetties were built at the mouth of the river and a new railroad brought sounds and supplies from Portland and ferried local produce to distant markets. Over time with access to other coastal areas increasing and a downturn of fishing and logging, economic pressures changed the area. For many years, state highway officials viewed



A view of downtown the 1920s and 1930s, when the city was at its peak.



A view of downtown the 1920s and 1930s, when the city was at its peak.



Looking south on Nehalem River from the 1920s, when the city was at its peak.

the coast highway through Nehalem as a temporary route. Long-range plans for U.S. Highway 101 involved bypassing the City completely with a new route south along the Nehalem spit (now Nehalem Bay State Park). Wide resistance by the citizens of both Nehalem and

Nehalem in the early 1970s to protect the spit caused the State to abandon the plan, thus the current route of the highway through Nehalem.



Tillamook Coast



Please clean up after your dog

PET BAGS



ATTENTION

**WEAR A LIFE JACKET
PLEASE USE & RETURN**

CITY OF NEHELEM LIFE JACKET LOANER STATION



